



© Photography by Jean Noir www.jeannoir.de



“THE AEOS IS SO EASY TO USE AND HANDLE. IT’S PERFECT FOR MY PHOTOGRAPHY”

MASTER OF LIGHT JEAN NOIR

SOFT LIGHT WITH OUTSTANDING COLOUR (CRI 96) • TRUE APERTURE DIMMING™ & DESIGNER FADE™ MODES DESIGNED FOR PORTRAIT / LOCATION PHOTO & VIDEO • HIGH SPEED SYNC FLASH (1/8000TH), NO RECYCLE TIME
ULTRA-THIN, PORTABLE, LIGHTWEIGHT DESIGN (1.4KG) • BUILT-IN WIRELESS HSS FLASH RECEIVER (200M/656FT)
INTEGRATED ALUMINIUM HANDLES & 360° BALL HEAD • CINESFX™ FOR CUSTOM LIGHTING FX (FIRE, LIGHTNING, TV)



© Terry Donnelly



©Christine Meintjes

facebook.com/rotolightuk

Discover more at...

youtube.com/rotolight

instagram.com/rotolight

twitter.com/rotolight

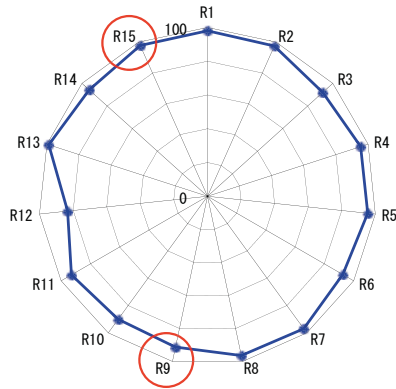
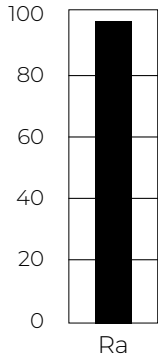
WWW.ROTOLIGHT.COM

+44 (0)1753 422 750

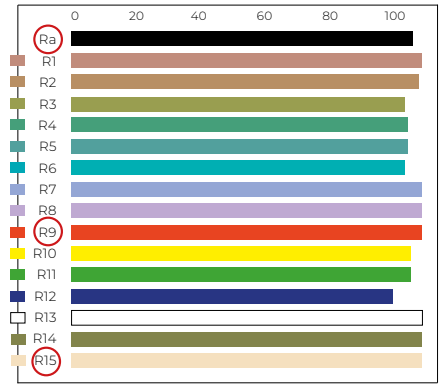
Designed and engineered at Pinewood Studios, UK

sales@rotolight.com

CRI TEST



**CRI
96**



x	y	Top(JIS)	duv(JIS)	Peak Wavele	Ra	R1	R2	R3	R4	R5	R6	R7	R8	R9	R10	R11	R12	R13	R14	R15
0.3890	0.3685	3700	-0.0063	456	96	98	97	92	95	95	93	97	96	91	90	93	83	99	94	98

TECHNICAL SPECIFICATION

ROTOLIGHT AEOS	
Beam angle	50 degree
TLCI (television lighting consistency Index)	96 Measured at 3200K using UPRTek C600
Overall CRI (Ra) skin tone CRI (R15)	CRI= >96 skin tone R15, CRI=98
Power consumption @100% output	42 watts @100% output 15V DC
Lux at 3ft (0.9m) *f-stop at ISO 200/400/800	5750 f11 / f15 / f22
Lux at 6ft (1.82m) *f-stop at ISO 200/400/800	1295 f5.6 / f8 / f11.0
Lux at 9ft (2.74m) *f-stop at ISO 200/400/800	614 f4.0 / f5.6 / f8.0
Control	Local or Skyport wireless, with Dynamic Drift Compensation and thermal monitoring
Weight	1.4 kg body only 1.95 kg inc 360° ball head
Dimensions	diameter 295mm (11.5") x depth 25mm (<1")
Mounting	integral 1/4" - 20 tripod mounts, with 360 ball head
Peak output	5750 Lux at 3ft (measured at midpoint of 4400K)
Luminous flux	3051 Lumens (measured at 15ft)
Colour range	3150-6300K
Included filters	216 - full diffusion, 250 - half diffusion 184 - cosmetic peach 279 - 1/8 magenta
Battery life	2 hours continuous mode or 85,000 flashes at full power
Max Shutter Sync Speed	1/8000th
Flash duration at max power	adjustable from 1/50th - 1/2500th

*F-stop in flash mode at 4300K

Photometrics	LED Angle	3ft / 0.9m		6ft / 1.82m		9ft / 2.74m	
AEOS (at midpoint 4400K)	50°	534fc	5750 lux	120fc	1295 lux	57fc	614 lux

ALSO AVAILABLE AS A 2 LIGHT KIT



TESTIMONIALS

"AEOS is one of the most versatile and enjoyable lights I have used!"

Nigel Atherton, Editor - Amateur Photographer

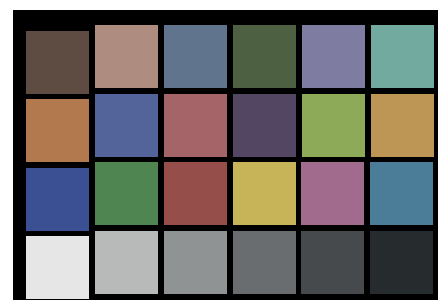
"AEOS is the light that filmmakers and gaffers have been crying out for. The integrated handles provide a unique flexibility to move and manipulate light quickly in order to get the perfect shot"

Stefan Lange - Visual FX Veteran (Batman, James Bond, Spectre & Tomb Raider)

ROTOLIGHT LED TLCI RESULT

Rotolight AEOS (S600): CCT = D5478 (-.21)
TLCI-2012: 96 (D5478)

EBU: TLCI-2012
Measured at 3200K using UPRTek C600



Sector	Lightness	Chrominance	Hue
R	0	0	0
R/V	0	0	-
Y	0	-	-
C	0	-	0
C/C	0	0	+
C	0	0	0
C/B	0	-	-
B	0	-	0
B/M	0	-	0
M	0	0	0
M/R	0	0	0

